

# SaberMaster™ Electric Master Stream Nozzle

## STYLE 1578

The SaberMaster nozzles are the only multi-purpose master stream nozzles in the fire service today. Find a distributor near you to learn more about the features and benefits of this combination nozzle.

### Features


The SaberMaster Electric Master Stream makes remote controlled monitors truly remote because you can now easily change from solid bore to fog flow streams with the flip of a switch. No other master stream nozzles have this 2-in-1 capability.

- SaberMaster reduces the risk of injury by not having to climb onto the deck to change tips
- Provides smooth bore reach and penetration OR fog stream cooling and protection, without having to shut down the water flow to switch tips.
- No issues with tip storage or missing tips because changing from a solid bore to adjustable fog pattern is built-in
- SaberMaster designed for use with Style 3440 DeckMaster or Style 3480 StreamMasterII Monitors
- Built-in Stream Shaper (SaberMaster 1250)

In addition to the 2" tip size, the SaberMaster is available in a 1 3/8" or 1 1/2" to the offering. The flow in fog stream now matches the flow in the tip.

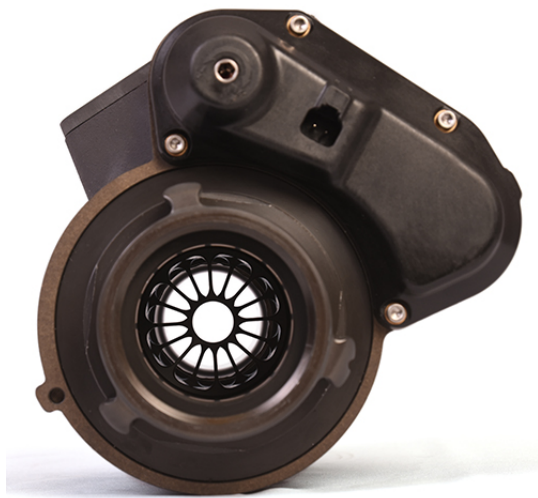


### Specifications

Style	1578
Warranty	
Gewicht	17 lbs (7.7 kg)
Typ	Master Stream
Material	Pyrolite
Brand	SaberMaster
Länge	12 5/32" (309 mm)
Breite	7 9/10" (200 mm)
Höhe	8 2/3" (221 mm)

# SaberMaster™ Electric Master Stream Nozzle

STYLE 1578



# SaberMaster™ Electric Master Stream Nozzle

**STYLE 1578**

## **Style 1578 SaberMaster Nozzle Specification**

The nozzle shall be constructed of Pyrolite, with a 2" orifice solid bore, and a fog flow of 1250 gpm at 80 psi. The nozzle shall have solid bore optional configurations of 1.5" & 1 3/8" with fog flows of 600 GPM & 500 GPM respectively. The nozzle shall have a built-in stream shaper and shall not exceed 12 5/32" in length or 17 lbs, in weight.